




GLACIER STONE SUPPLY LLC

ARCHITECTURAL & LANDSCAPE STONE



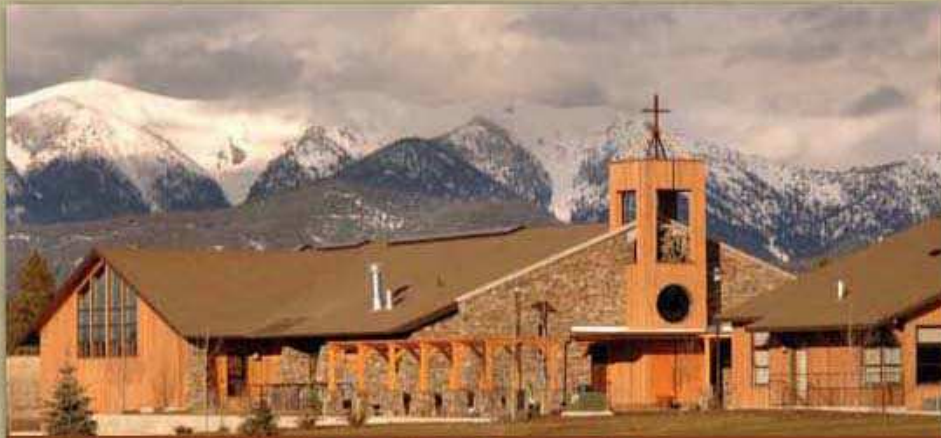
Canyon Creek / Wolf Creek Mix



GLACIER STONE SUPPLY

The leading Natural Lite™ Thin Veneer and full stone producer in the market today. We are located in Northwest Montana near Glacier National Park. Formed over millions of years, our many varieties of stone have striking color, texture and shape. No other stone compares to the natural beauty we can provide to you.





CANYON CREEK LEDGE NLTV



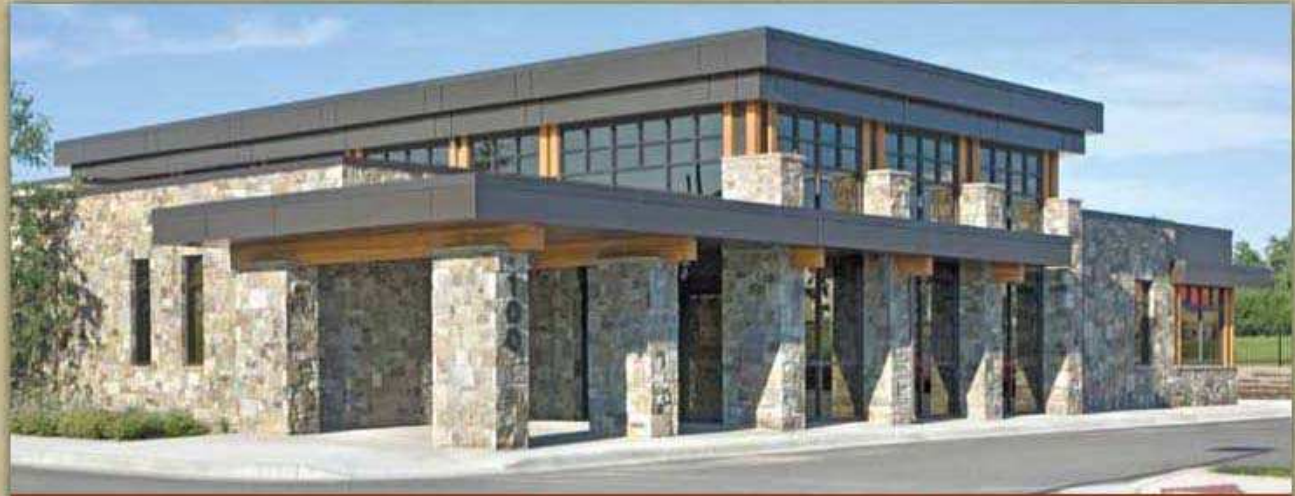
BITTERROOT LEDGE NLTV



CANYON CREEK LEDGE NLTV



CANYON CREEK LEDGE NLTV



BITTERROOT SQUARES & RECTANGLES NLTV

SPECIALIZING IN THE REVOLUTIONARY NATURAL LITE™ THIN VENEER



NATURAL LITE™ THIN VENEER



Natural stone provides a visual class and permanence that no other interior or exterior product can provide. It has unique qualities that only Mother Nature can produce.

Natural Lite™ Thin Veneer (NLTV) is a lightweight alternative to full stone and a higher quality alternative to manufactured stone.



LEDGESTONE

Length: 4" to 20" +
Height: 2" to 10"
Thickness: .5" to 1.5"



CORNERS

Length: 4" to 12" +
Height: 2" to 12"
Thickness: .5" to 1.5"



RANDOM STONE*

Length: 5" to 15" +
Height: 4" to 11"
Thickness: .5" to 1.5"



SQUARES & RECTANGLES

Length: 6" to 24"
Height: 6" to 14"
Thickness: .5" to 1.75"

SOME OF THE ADVANTAGES OF NLTV INCLUDE:

- It is easier for masons to handle and can be installed in less than half the time of full stone providing a substantial cost savings. (Time savings will vary based on design, i.e., Drystack, etc.)
- In many cases, it can be installed without a ledge or foundation making it especially easy to use for remodeling projects, interior applications and zero-clearance fireplaces.
- Each piece of NLTV is unique and there are no repeating patterns on installation unlike manufactured stone.
- Natural stone eliminates the carbon footprint of replacing worn or aged manufactured stone.
- Installation of NLTV over manufactured stone, in conjunction with other upgrades, will substantially increase the appraised value.
- In most cases, the cost savings on shipping NLTV over full stone provides up to a 75% savings.

* Random Stone is not available in Elk River or Falls Creek.



CANYON CREEK™

The Canyon Creek family is one of our most popular stones featuring rich colors ranging from chocolate brown, tans, and blue/gray tones — true to the Northern Rockies.



Canyon Creek Ledge



CANYON CREEK LEDGE



CANYON CREEK TUMBLED LEDGE



CANYON CREEK RANDOM



CANYON CREEK SQUARES & RECTANGLES



BITTERROOT™

The Bitterroot family of stone features vibrant hues of burgundy, gold and bronze set against a neutral background of grays and browns.



BITTERROOT LEDGE



BITTERROOT TUMBLED LEDGE



BITTERROOT RANDOM



BITTERROOT SQUARES & RECTANGLES

NATURAL LITE™ THIN VENEER



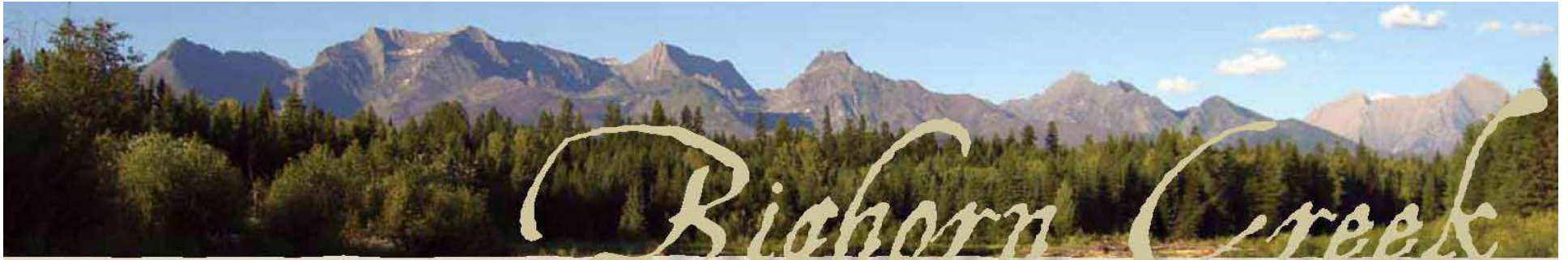
LOON LAKE™

Loon Lake comes in a wide array of colors including greens, bronze, browns, tans and slate grays with subtle sedimentary striations.



LOON LAKE LEDGE

Also Available in
LOON LAKE RANDOM
(not pictured)



BIGHORN CREEK™

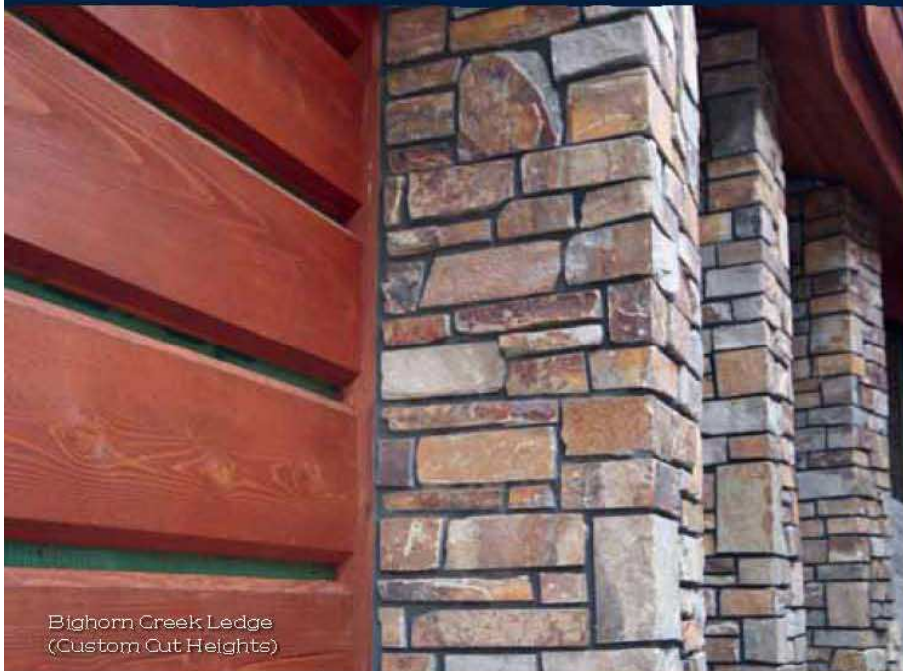
Bighorn Creek has a wide range of rich multi-colored hues of rust, bronze and copper created from the stone's iron content. Its core is a blue gray.



BIGHORN CREEK LEDGE

Also Available in
BIGHORN CREEK RANDOM
(not pictured)

Bighorn Creek products should not be installed on or near a water feature or pool. Bighorn Creek products contain a certain amount of iron, thus bleeding may occur. Bighorn Creek products must be cleaned with a cement or stone cleaner and allowed to dry completely. Masons must be very careful not to mix too much lime or calcium in their mortar mix to avoid "bleeding". Masons should seal Bighorn Creek after it is set in mortar. Glader Stone, LLC is not responsible for improper installation that results in "bleeding". There is NO WARRANTY against this stone "bleeding" by Glader Stone Supply, LLC.



Bighorn Creek Ledge
(Custom Cut Heights)

NATURAL LITE™ THIN VENEER



GLACIER MOUNTAIN™

This family of stone has a cream base with hues of gold, black and light grays running throughout.



Glacier Mountain
Ledge



GLACIER MOUNTAIN LEDGE



GLACIER MOUNTAIN TUMBLED LEDGE

Also Available in
GLACIER MOUNTAIN RANDOM
GLACIER MOUNTAIN TUMBLED RANDOM
(not pictured)

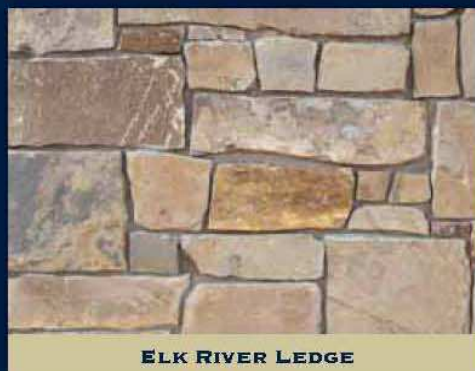
Elk River / Buckskin

ELK RIVER™/BUCKSKIN™

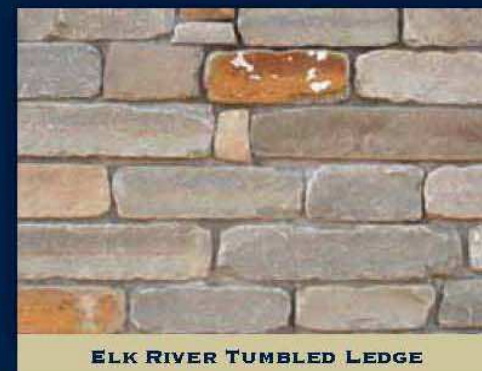
Elk River (lighter) / Buckskin (darker) is distinguished by a soft range of colors from cream, tan to soft gray. Buckskin's range of colors is tan to darker grays.



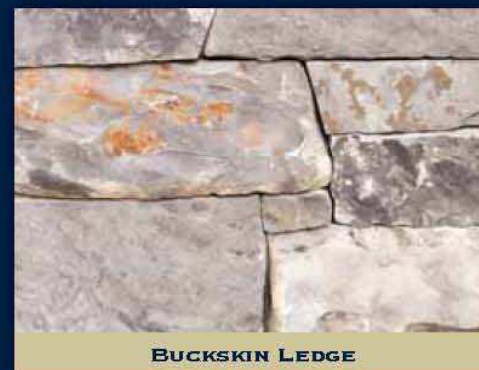
Elk River Ledge



ELK RIVER LEDGE



ELK RIVER TUMBLED LEDGE



BUCKSKIN LEDGE

NATURAL LITE™ THIN VENEER

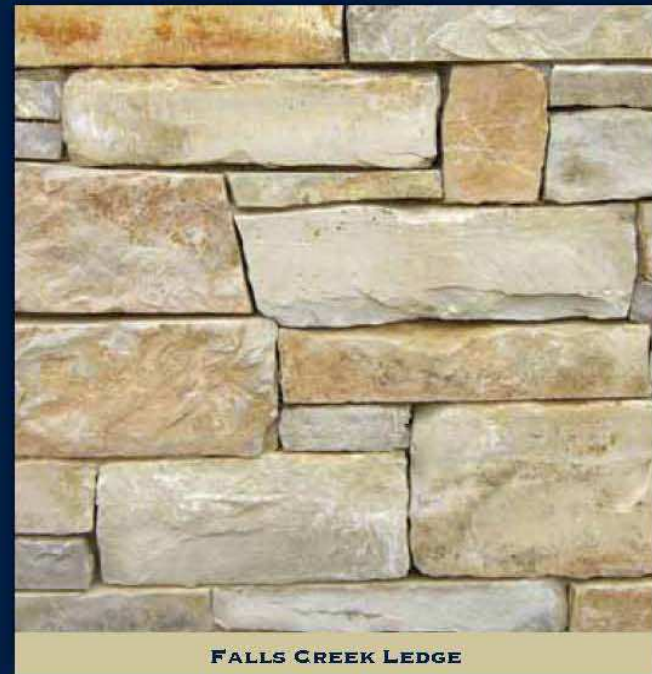


FALLS CREEK™

Falls Creek is a lighter toned product ranging from light tan to gold with occasional buff hues accenting the soft, warm textures.



Falls Creek Squares & Rectangles



FALLS CREEK LEDGE



FULL STONE

Glacier Stone Supply is the industry leader not only in Natural Lite™ Thin Veneer, but we are also the industry leader in traditional full bed depth building stone. Full bed depth stone is still regarded as the premium choice for high-end construction. Stone was one of the first materials ever used to construct man-made structures — many of which are still standing. Nothing compares to the permanence and appeal of stone.



CANYON CREEK TUMBLED STACKED LEDGE



CANYON CREEK LEDGE



CANYON CREEK DRYSTACK



Canyon Creek

CANYON CREEK™

The Canyon Creek family is one of our most popular stones featuring rich colors ranging from chocolate brown, tans, and blue/gray tones — true to the Northern Rockies.





BITTERROOT™

The Bitterroot family of stone features vibrant hues of burgundy, gold and bronze set against a neutral background of grays and browns.





LOON LAKE™

Loon Lake comes in a wide array of colors including greens, bronze, browns, tans and slate grays with subtle sedimentary striations.





WOLF CREEK™

Wolf Creek is one of our most popular stones due to its rich color range and patterns. This stone offers beautiful colors ranging from gold, rust, mahogany, blues and grays for a truly exceptional look.

Wolf Creek products should not be installed on or near a water feature or pool. Wolf Creek products contain a certain amount of iron, thus bleeding may occur. Wolf Creek products must be cleaned with a cement or stone cleaner and allowed to dry completely. Masons must be very careful not to mix too much lime or calcium in their mortar mix to avoid "bleeding". Masons should seal Wolf Creek after it is set in mortar. Glacier Stone, LLC is not responsible for improper installation that results in "bleeding". There is NO WARRANTY against this stone "bleeding" by Glacier Stone Supply, LLC.



Wolf Creek Patio Stone



BIGHORN CREEK™

Bighorn Creek has a wide range of rich multi-colored hues of rust, bronze and copper created from the stone's iron content. Its core is a blue gray.



Bighorn Creek Patio



Bighorn Creek Ledge and Random

Bighorn Creek products should not be installed on or near a water feature or pool. Bighorn Creek products contain a certain amount of iron, thus bleeding may occur. Bighorn Creek products must be cleaned with a cement or stone cleaner and allowed to dry completely. Masons must be very careful not to mix too much lime or calcium in their mortar mix to avoid "bleeding". Masons should seal Bighorn Creek after it is set in mortar. Glacier Stone, LLC is not responsible for improper installation that results in "bleeding". There is NO WARRANTY against this stone "bleeding" by Glacier Stone Supply, LLC.



Bighorn Creek Ledge



GLACIER MOUNTAIN™

This family of stone has a cream base with hues of gold, black and light grays running throughout.





Elk River / Buckskin

ELK RIVER™/BUCKSKIN™

Elk River (lighter) / Buckskin (darker) is distinguished by a soft range of colors from cream, tan to soft gray. Buckskin's range of colors is tan to darker grays.



Elk River Patio, Ledge and Capstone



Buckskin Ledge



FALLS CREEK™

Falls Creek is a lighter toned product ranging from light tan to gold with occasional buff hues accenting the soft, warm textures.



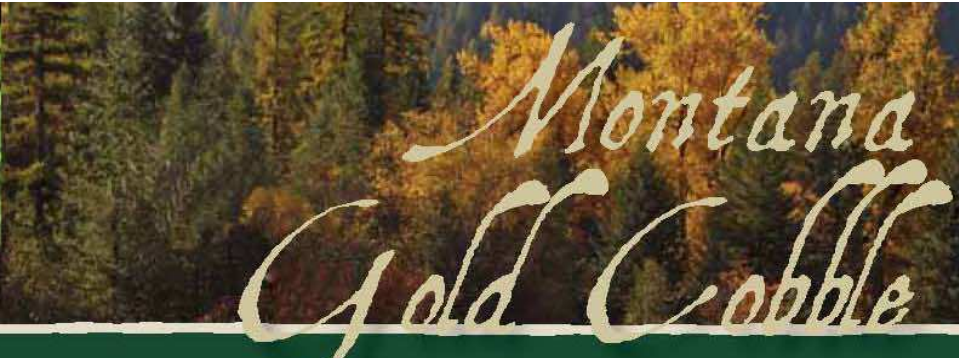
Falls Creek Ledge



Falls Creek Ledge



Falls Creek Ledge



RAINBOW COBBLE

Rainbow Cobble is unique to this area and was shaped by glacial activity. Colors range from greens, blues, grays, mauves and gold.



MONTANA GOLD COBBLE

The Montana Gold Cobbles have the ability to enhance the beauty of any building application with colors ranging from golden brown to grays, tans and buckskin.





Multi-Cut Ledge

MULTI-CUT LEDGE

Multi-Cut Ledge has at least one natural face with one or more sawn edges. The colors of multi-cut ledge can be selected from our Canyon Creek, Bitterroot, Loon Lake, Glacier Mountain and Falls Creek products.*

*See individual pages for color descriptions.



Bitterroot Multi-Cut Ledge



TUSCAN WALL ROCK

Colors of Tuscan Wall Rock can be selected from our Canyon Creek, Bitterroot or Loon Lake products.*

*See individual pages for color descriptions.



Bitterroot Tuscan Wall Rock

MOSSY TUSCAN WALL ROCK

Mossy Tuscan Wall Rock stone is covered with moss and lichen and is available in our Canyon Creek or Bitterroot products.*

*See individual pages for color descriptions.



Canyon Creek Mossy Tuscan Wall Rock



CANYON CREEK



BITTERROOT



LOON LAKE



WOLF CREEK



BIGHORN CREEK



GLACIER MOUNTAIN



ELK RIVER



BUCKSKIN



FALLS CREEK



CANYON CREEK TUMBLED



BITTERROOT TUMBLED



GLACIER MOUNTAIN TUMBLED



ELK RIVER TUMBLED



Canyon Creek Ledge Natural Lite™ Thin Veneer

GENUINE STONE 

Members of



CONTENT ©2008, GLACIER STONE SUPPLY, LLC
ALL RIGHTS RESERVED.



OFFICE: 406.755.5717
FAX: 406.755.5718
955 WHITEFISH STAGE ROAD
KALISPELL, MT 59901
WWW.GLACIERSTONESUPPLY.COM

